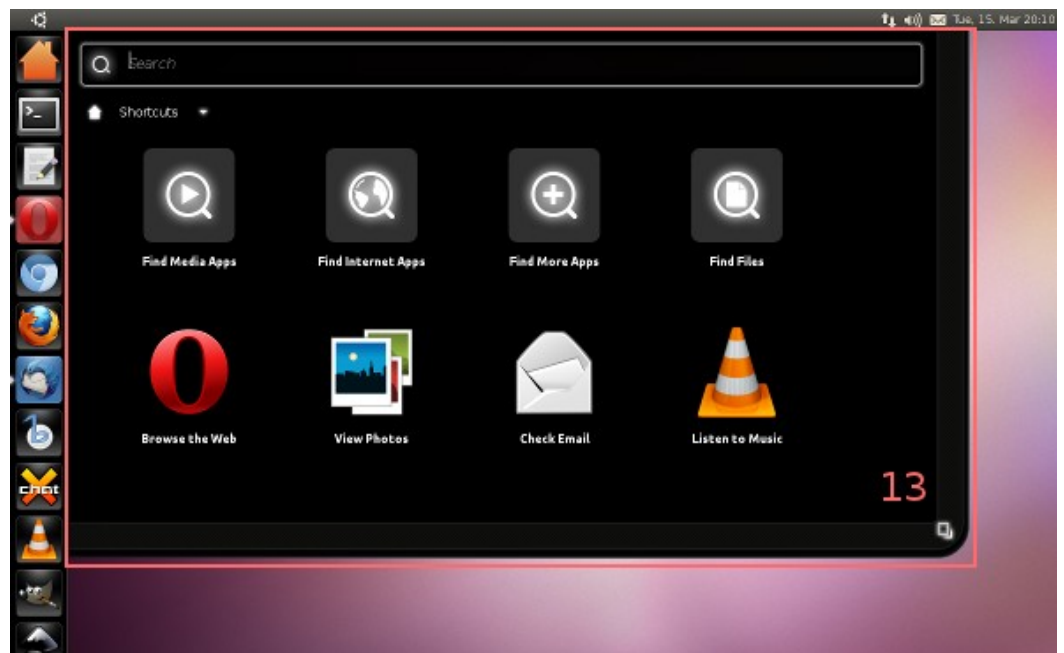
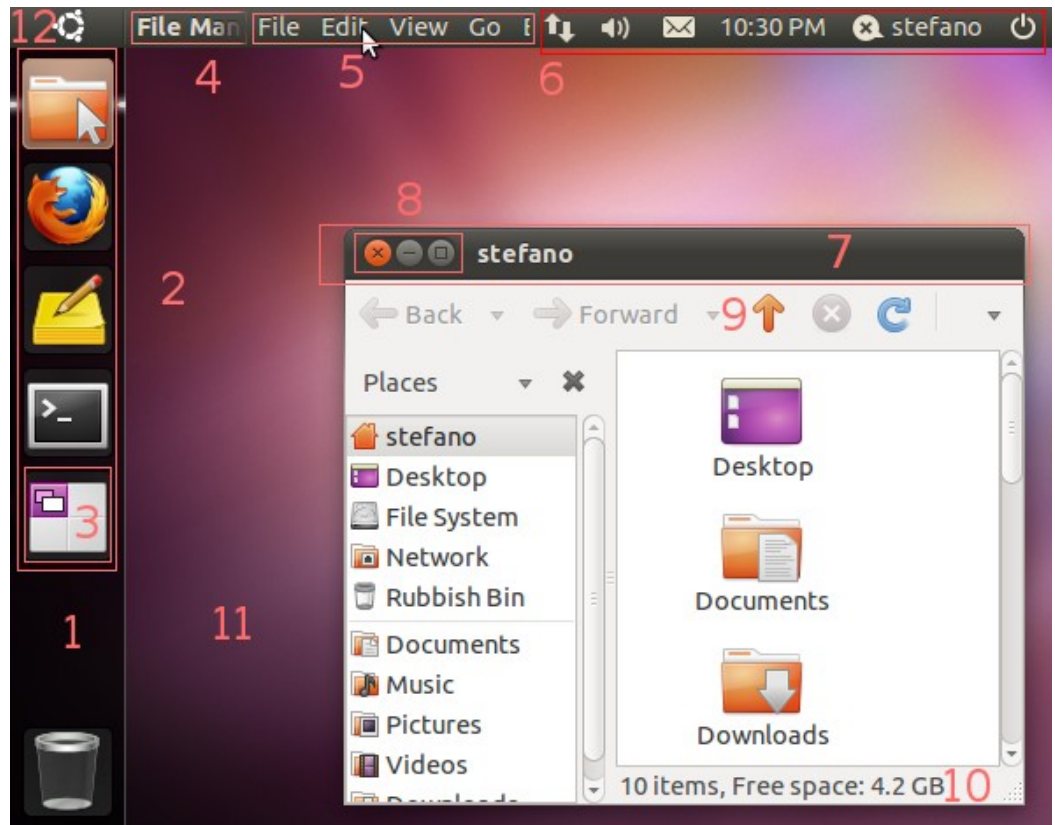


# Ubuntu 11.04 Natty Narwhal - Unity Cheat Sheet

## Desktop UI Elements

1. Launcher
2. Launcher Items
3. Workspace Switcher
- Menu Bar:
  4. Window Title
  5. Application Menu
6. The Indicators:
  - i. Network Indicator
  - ii. Sound Menu
  - iii. Messaging Menu
  - iv. Clock
  - v. Me Menu
  - vi. Session Menu
  - vii. And others
7. Window Decoration
8. Window Buttons
9. Toolbar
10. Status Bar
11. Desktop
12. Home Button (or BFB, "Big Freakin' Button")
13. Dash



# Ubuntu 11.04 Natty Narwhal - Unity Cheat Sheet

## Keyboard Shortcuts

### Launcher

- Hold **Super** - Invoke the Launcher.
- Hold **Super**, then **1** or **2** or **3** and so on until **0** - Open or focus an application. The number corresponds to the location of the icon on the launcher from top to bottom.
  - Adding **Shift** will open a new instance of the application if it's already open.
  - Holding the key is also useful when you want to get to the Launcher but do not want to invoke the Dash.
- **Super-T** - Open the rubbish bin/trash can.
- **Alt-F1** - Put keyboard focus on the Launcher, use arrow keys to navigate, **Enter** launches an application, Right arrow exposes the quicklists if an application has them.
- **Ctrl-Alt-T** - Launch a terminal window.
- **Super-A** - Open Applications place
- **Super-F** - Open Files & Folders place

### Dash

- Tap **Super** - Opens the Dash
- **Alt-F2** - Invoke the Dash in a "special mode" to run a command. Typing in a Folder Name will find that folder in Nautilus, you can also use **~** as a shortcut in the field.
- The Dash opens with focus on the search box to find applications and files. Using the arrow keys will navigate the results, use **Enter** to launch.

### Panel

- **F10** - Open the first menu on the panel, use the arrows keys to "scrub" across the menus. (There is no shortcut for the session menu, so hitting **F10** and left arrow is a quick way to get there)
  - Press **Esc** to close the menus without choosing anything.

### Window Management

- **Super-W** - Spread mode, zoom out on all windows in all workspaces.
- **Super-D** - Minimize all windows; hitting it again restores them.

### Window Placement

If you cycle through the same key Unity will cycle through different placement widths, so experiment by hitting the numkey multiple times, for example **Ctrl-Alt-numpad 5 5 5**:

- **Ctrl-Alt-Numpad 7** - Place window in top left corner of screen.
- **Ctrl-Alt-Numpad 8** - Place window in top half of screen.
- **Ctrl-Alt-Numpad 9** - Place window in top right corner of screen.
- **Ctrl-Alt-Numpad 4** - Place window on the left side of the screen.
- **Ctrl-Alt-Numpad 5** - Center/Maximize the window in the middle of the screen.
- **Ctrl-Alt-Numpad 6** - Place window on the right side of the screen.
- **Ctrl-Alt-Numpad 1** - Place window in the bottom left corner of the screen.
- **Ctrl-Alt-Numpad 2** - Place window in the bottom half of the screen.
- **Ctrl-Alt-Numpad 3** - Place window in the bottom right corner of the screen.
- **Ctrl-Alt-Numpad 0** - Maximize window.

# Ubuntu 11.04 Natty Narwhal - Unity Cheat Sheet

## Keyboard Shortcuts (cont.)

### Workspace Management

- **Super-S** - Expo mode (for everything), zooms out on all the workspaces and lets you manage windows.
- **Shift-Alt-↑** - Expo mode for all windows in the current workspace only.
- **Ctrl-Alt-← / → / ↑ / ↓** - Change to a new workspace.
- **Ctrl-Alt-Shift-← / → / ↑ / ↓** - Place window to a new workspace.
- **Ctrl-Alt-L** - Lock the screen.

### Screenshots

- **PrtScn** - Take a screenshot of the current workspace
- **Alt-PrtScn** - Take a screenshot of the current window

## Mouse Tricks

### Launcher

- Clicking and holding an icon and then dragging it around will allow you to reorder it on the launcher. You can also drag it off to the right of the launcher to move it around. Note that you need to make an explicit movement to the right to move the icon off the launcher before you can move it around.
- Dragging and Dropping an icon into the trash can will remove it from the Launcher. The program itself will remain installed and accessible through the dash.
- Scrolling the mouse wheel while over the Launcher scrolls the icons if you have too many and need to move around quickly.

### Window Management

- **Maximizing** - Dragging a window to the top panel will maximize it.
- **Restore** - There are two ways to restore, or unmaximize the topmost maximized window of the current monitor for this workspace (not using the window controls)
  - Double clicking on the top panel (but not in the application's menu)
  - Dragging the top panel down.
- **Maximize Window Vertically** - Middle click on Maximize
- **Maximize Window Horizontally** - Right click on Maximize
- **Focus the topmost maximized window of the current monitor for this workspace:** Left click on the top panel (but not in the application's menu)
- **Cycle between maximized windows of the current monitor for this workspace:** Middle click on the top panel (but not in the application's menu)
- **Tiling** - Dragging a Window to the left/right border will auto tile it to that side of the screen.
- **Middle click on an application's launcher icon** - Open a new instance of the application in a new window. If the application isn't running it will just open it normally.
- **Middle click on the top panel (but not the menu)** - send the current window behind all other windows.